



# SELVA CORAL

Jacó, Puntarenas  
Costa Rica

A real estate development in the  
middle of the forest and the sea



# TABLE OF CONTENTS

<b>3</b>	LOCATION
<b>5</b>	PROJECT VISION
<b>9</b>	MASTER PLAN
<b>11</b>	HOUSES
<b>16</b>	TOWERS
<b>17</b>	ARRECIFE TOWER- APARTMENTS
<b>19</b>	ARRECIFE TOWER - PENTHOUSE
<b>21</b>	APARTMENTS
<b>26</b>	PENTHOUSE
<b>31</b>	PARKING
<b>33</b>	AMENITIES
<b>39</b>	INFRASTRUCTURE
<b>42</b>	ABOUT US





# LOCATION

## Best location in Jacó

Selva Coral is the perfect balance between forest and the sea.

Live surrounded by the greatest natural beauty of the area.



Only 1 hour away from Juan Santamaria International Airport.



3 hours away from Guanacaste Airport.



## Close to



Marinas



Shops



Supermarkets



Drugstores



Restaurants



Golf



SELVA CORAL







# VISION OF THE PROJECT



# Celebrate nature

The project functions as an anchor point between people and nature allowing connections to be forged. It is about building and community in Jacó with a sense of belonging for residents and visitors alike.





# VISION OF THE PROJECT

## Building a sense of community

In the wake of a global health crisis, people are yearning for a greater connection with nature, including private outdoor open spaces for residential units. This is driving increased demand for balconies and open spaces.



SELVA CORAL



# Wellness as a lifestyle

Our natural environments supply the perfect space to live, study, shop, and entertain.

Our core value is to provide environments and amenities with an active and holistic lifestyle ensuring the well-being of our residents.





# MASTER PLAN



# MASTER PLAN



A. Entrance

B. Treatment Plant

C. Social Area (Club House)

D. Children's playground

E. Arrecife Tower

F. Outdoor parking

G. Coral Tower

H. Social Area (Swimming Pool)

I. Dog Park

J. Houses



SELVA CORAL



HOUSES



# HOUSES



SELVA CORAL



## Floresta



2 floors



170 m<sup>2</sup>



3 bedrooms



2.5 bathrooms



2 parking spaces



Private pool

## Arboleda



1 floor



125 m<sup>2</sup>



2 bedrooms



2 bathrooms



2 parking spaces



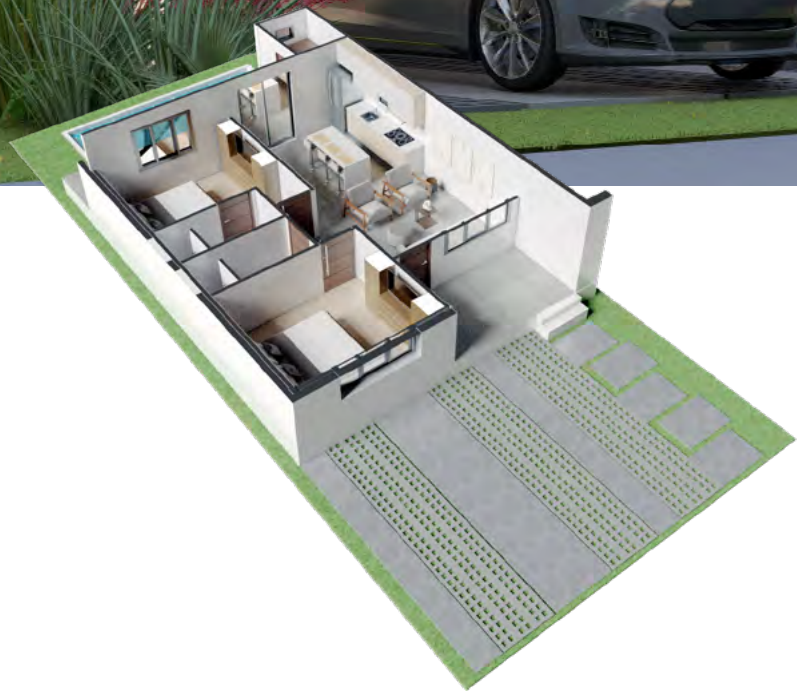
Private pool





FLORESTA





ARBOLEDA







TOWERS



# ARRECIFE TOWER



## APARTMENTS

### Coralina



91 m<sup>2</sup>



2 bedrooms



2.5 bathrooms



1 - 2 parking spaces

### Central Coralina



83 m<sup>2</sup>



3 bedrooms



2.5 bathrooms



1 - 2 parking spaces



SELVA CORAL



# ARRECIFE TOWER



## APARTMENTS

### East Salinas



140 m<sup>2</sup>



3 bedrooms



3 bathrooms



1 parking space

### West Salinas



140 m<sup>2</sup>



3 bedrooms



3 bathrooms



1 parking space



SELVA CORAL





## PENTHOUSE

### Central Penthouse



200 m2



3 bedrooms



3.5 bathrooms



1 parking space

### West Penthouse



181 m2



3 bedrooms



3.5 bathrooms



1 parking space



SELVA CORAL





## PENTHOUSE

### East Penthouse



181 m<sup>2</sup>



3 bedrooms



3 bathrooms



1 parking space





# APART MENTS





CORALINA





CENTRAL CORALINA





EAST SALINAS





WEST SALINAS



# PENT HOUSE





CENTRAL PENTHOUSE





EAST PENTHOUSE





WEST PENTHOUSE







PARKING



# PARKING



ARRECIFE TOWER



EXTERIOR



SELVA CORAL



AMENI  
TIES



# AMENITIES



SELVA CORAL



## Project Amenities

Our menu of amenities is designed to enhance the enjoyment of your vacation time.



Casa Club



Green areas



Dog park



Trails



Areas for yoga



Swimming pool



Bicycle parking



Playground



High speed internet



BBQ space





# AMENITIES



SELVA CORAL





## Amenities exclusive to the Towers

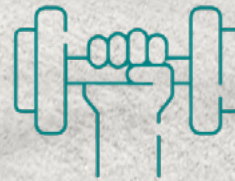
Our menu of amenities is designed to enhance the enjoyment of your vacation time.



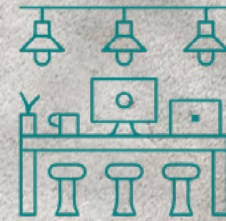
Kids area



Entertainment



Gym



Co-working





# AMENITIES



SELVA CORAL



# INFRA STRUC TURE



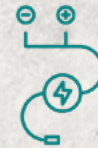
# INFRASTRUCTURE



Cobblestone  
roads



Guest  
parking



Subterranean  
wiring



CCTV



Perimetral  
enclosure



Security  
post



Gated  
community



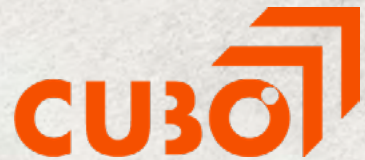




# ABOUT US

Selva Coral is a project located in the best natural area of Jacó, with multiple accesses, excellent security and privacy.

Developed by



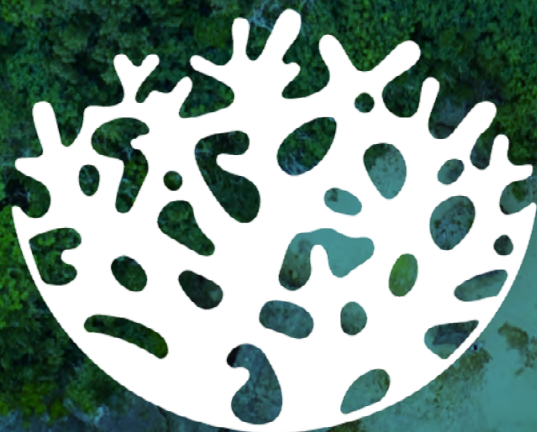
A project with the support and sponsorship of



SELVA CORAL







# SELVA CORAL

Jacó, Puntarenas  
Costa Rica